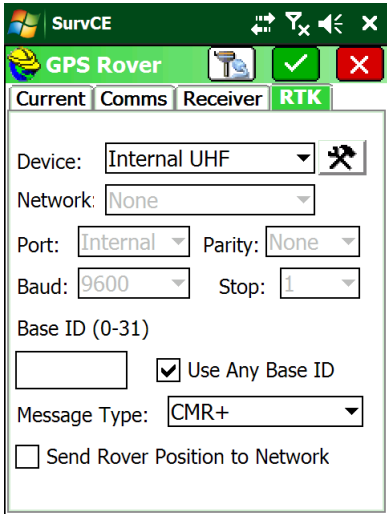


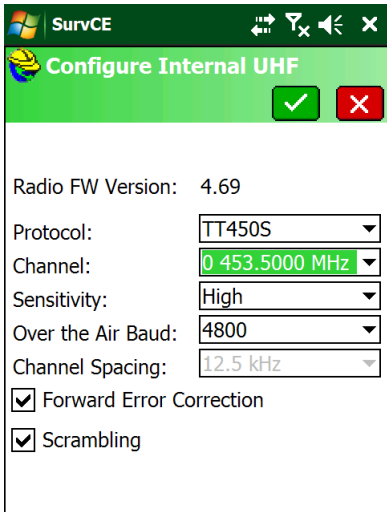
## Connecting X900+ or X91+ to Saint George Base

Date: 20 February 2015

From Main Menu: Equip: GPS Rover, then bond to Bluetooth if needed on Comms tab, then set HI on Receiver tab, then configure RTK tab:



Press 'Hammer/Wrench' to right of Internal UHF:



Set as shown for main base, Ch1 is 453.400 which is Utah Hill and Ch2 is 453.250 which is Washington repeater.

Always check "Forward Error Correction" and "Scrambling", click green check mark to continue.